

Certificate SGSCH-FM/COC-012087

The Organization

General Incorporated Association Mokuty Club

68-1 Sakutadai Aza, Motomiya-shi, Fukushima

has been assessed and certified as meeting the requirements of

Forest Management

The company was assessed against the following standards and scope

Forest Management Certification

FSC-STD-50-001 Requirements for use of the FSC trademarks by Certificate Holders

FSC-STD-30-005 V2-0 JP Forest management groups

For the following activities

Forest Management of secondary forests and plantations in Fukushima prefecture of Japan for the production of softwood and hardwood timber

according to the FSC Accredited National Standard for Japan, version 1.1 of 2020.12.1

This certificate is valid from 15 August 2024 until 14 August 2029 and remains valid subject to satisfactory surveillance audits.

Issue 1. Certified since 15 August 2024

This is a group scheme. Additional members are listed on the subsequent page



Authorised by

Natalia Marius

Authorised by

Christian Kobel

SGS Société Générale de Surveillance SA

1, Place des Alpes, 1201 Geneva, Switzerland

t +41 (0)22 739 91 11 - www.sgs.com

The validity of this certificate shall be verified on <https://search.fsc.org>. For the full list of product groups covered by the certificate see <https://search.fsc.org>. This certificate itself does not constitute evidence that a particular product supplied by the certificate holder is FSC-certified [or FSC Controlled Wood]. Products offered shipped or sold by the certificate holder can only be considered covered by the scope of this certificate when the required FSC claim is clearly stated on sales and delivery documents. The certificate remains the property of SGS. The certificates and all copies or reproductions shall be returned or destroyed if requested by SGS.



This document is an authentic electronic certificate for Client business purposes use only. Printed version of the electronic certificate are permitted and will be considered as a copy. This document is issued by the Company subject to SGS General Conditions of certification services available on [Terms and Conditions](#) | SGS. Attention is drawn to the limitation of liability, indemnification and jurisdictional clauses contained therein. This document is copyright protected and any unauthorized alteration, forgery or falsification of the content or appearance of this document is unlawful.



Certificate SGSCH-FM/COC-012087, continued

General Incorporated Association Mokuty Club



Forest Management

Issue 1

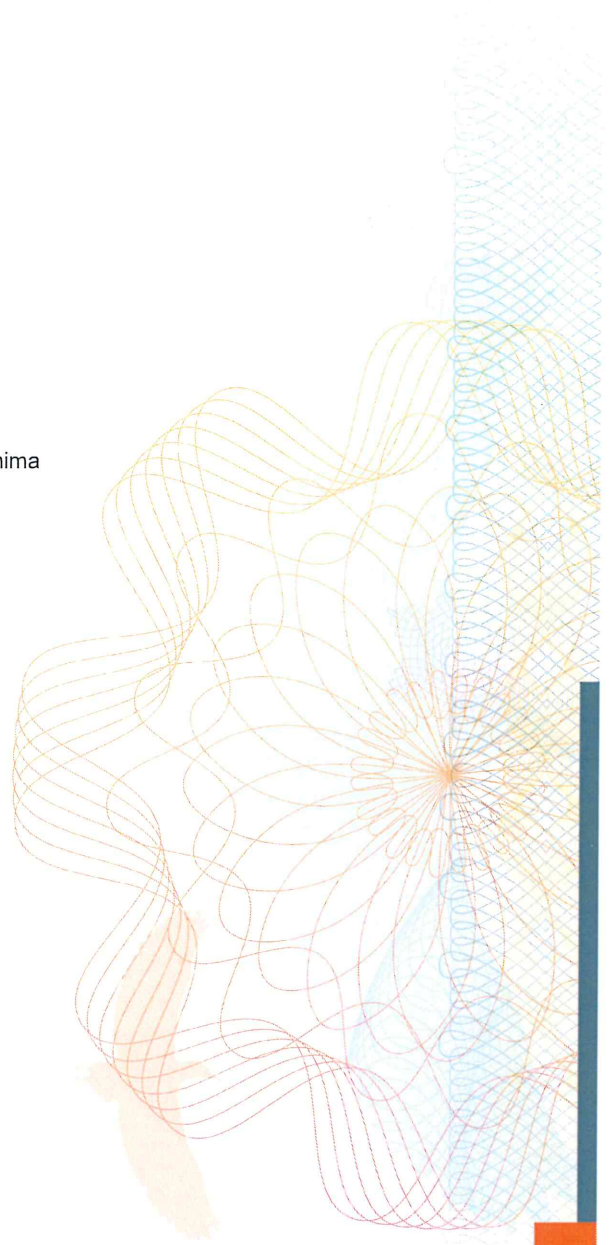
Group Members

General Incorporated Association Mokuty Club
68-1 Sakutadai Aza, Motomiya-shi, Fukushima

Minamiaizu forestry cooperative
33-1 Miyamotohigashi, Tajima-aza, Minamiaizu-cho, Minamiaizu-gun, Fukushima

Tamura forestry cooperative
62-7 Dogairi, Nishimuki-aza, Tokiwa-cho, Tamura-shi, Fukushima

TOONOKOUSAN CORPORATION
44-3, Ishida, Negishi-aza, Toono-cho, Iwaki-shi, Fukushima



This document is an authentic electronic certificate for Client' business purposes use only. Printed version of the electronic certificate are permitted and will be considered as a copy. This document is issued by the Company subject to SGS General Conditions of certification services available on [Terms and Conditions](#) | SGS. Attention is drawn to the limitation of liability, indemnification and jurisdictional clauses contained therein. This document is copyright protected and any unauthorized alteration, forgery or falsification of the content or appearance of this document is unlawful.

